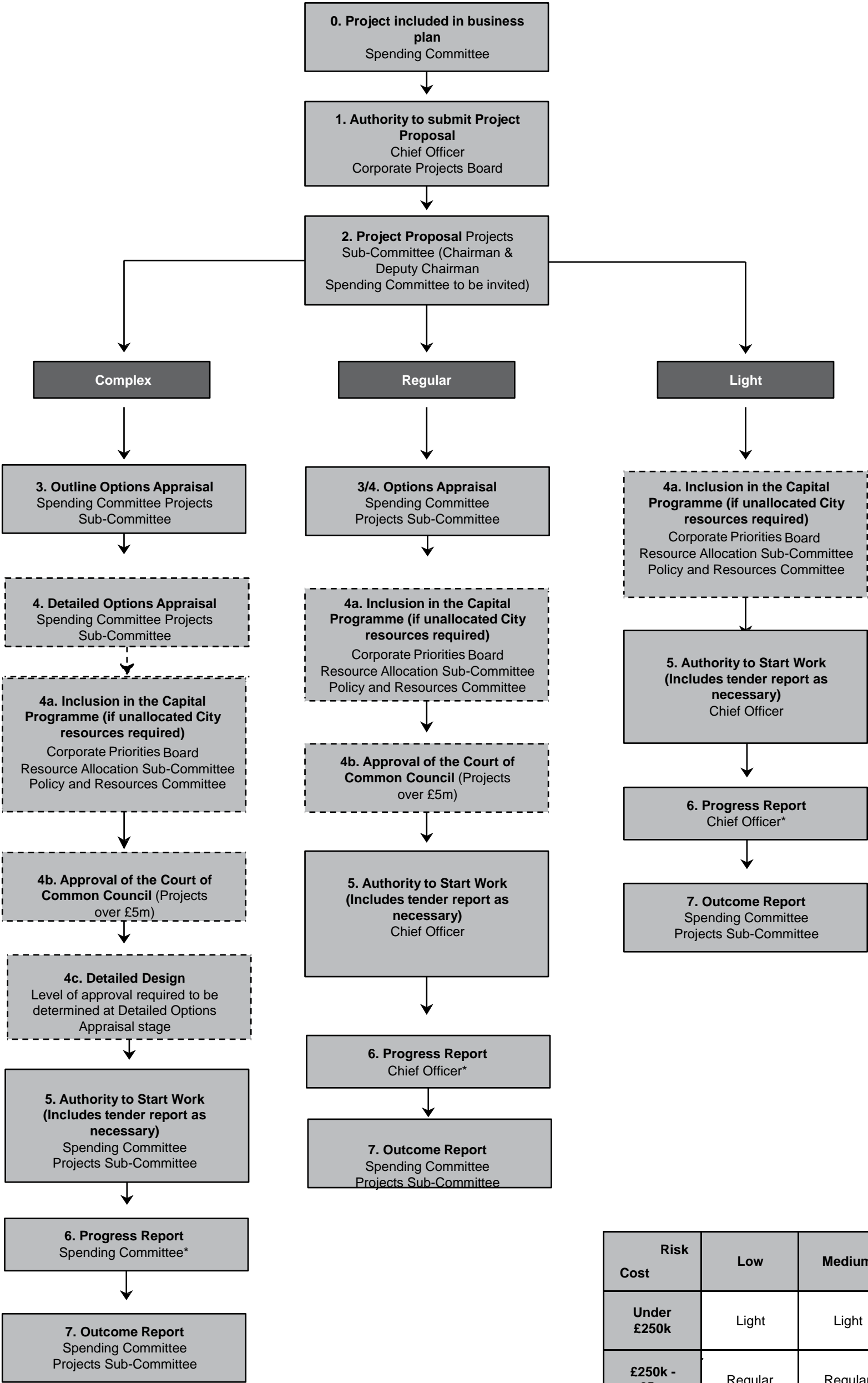


Gateway Approval Process

The procedure applies to projects that result in tangible, physical deliverables (including IS projects) in the following categories.

- Capital and Supplementary Revenue projects (including those within agreed strategies) >£50k
- Routine Revenue projects >£250k
- Capital and Supplementary Revenue projects delivered with ringfenced funds >£250k



Risk	Low	Medium	High
Cost	Low	Medium	High
Under £250k	Light	Light	Regular
£250k - £5m	Regular	Regular	Complex
Over £5m	Regular	Complex	Complex

* Projects Sub Committee regularly reviews the whole programme of project